



LEGO club™

JOIN FREE NOW!

www.LEGOclub.com

ENGLISH 1-866-534-6258

FRANÇAIS 1-877-518-5346

Use source code VJ29 when you sign up!

LEGO

INDIANA JONES

All New!
LEGO® Indiana Jones™
Adventures



7199



7196

© 2009 The LEGO Group. LEGO, The LEGO Logo, and the Brick and Knob configurations and the Mini Figure are trademarks of the LEGO Group. ©2009 Lucasfilm Ltd. & TM. All rights reserved. Microsoft, Xbox, Xbox 360, Xbox LIVE, and the Xbox logos are trademarks of the Microsoft group of companies.

3397602

XBOX 360

XBOX LIVE

LEGO

INDIANA JONES 2
THE
ADVENTURE CONTINUES



EVERYONE 10+
E
10+
CONTENT RATED BY
ESRB

T
games

LUCASARTS™

⚠ WARNING Before playing this game, read the Xbox 360® Instruction Manual and any peripheral manuals for important safety and health information. Keep all manuals for future reference. For replacement manuals, see www.xbox.com/support or call Xbox Customer Support.

Important Health Warning About Playing Video Games

Photosensitive seizures

A very small percentage of people may experience a seizure when exposed to certain visual images, including flashing lights or patterns that may appear in video games. Even people who have no history of seizures or epilepsy may have an undiagnosed condition that can cause these "photosensitive epileptic seizures" while watching video games.

These seizures may have a variety of symptoms, including lightheadedness, altered vision, eye or face twitching, jerking or shaking of arms or legs, disorientation, confusion, or momentary loss of awareness. Seizures may also cause loss of consciousness or convulsions that can lead to injury from falling down or striking nearby objects.

Immediately stop playing and consult a doctor if you experience any of these symptoms. Parents should watch for or ask their children about the above symptoms—children and teenagers are more likely than adults to experience these seizures. The risk of photosensitive epileptic seizures may be reduced by taking the following precautions: Sit farther from the screen; use a smaller screen; play in a well-lit room; do not play when you are drowsy or fatigued.

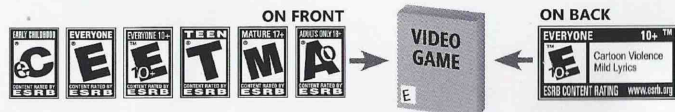
If you or any of your relatives have a history of seizures or epilepsy, consult a doctor before playing.

ESRB Game Ratings

The Entertainment Software Rating Board (ESRB) ratings are designed to provide consumers, especially parents, with concise, impartial guidance about the age-appropriateness and content of computer and video games. This information can help consumers make informed purchase decisions about which games they deem suitable for their children and families.

ESRB ratings have two equal parts:

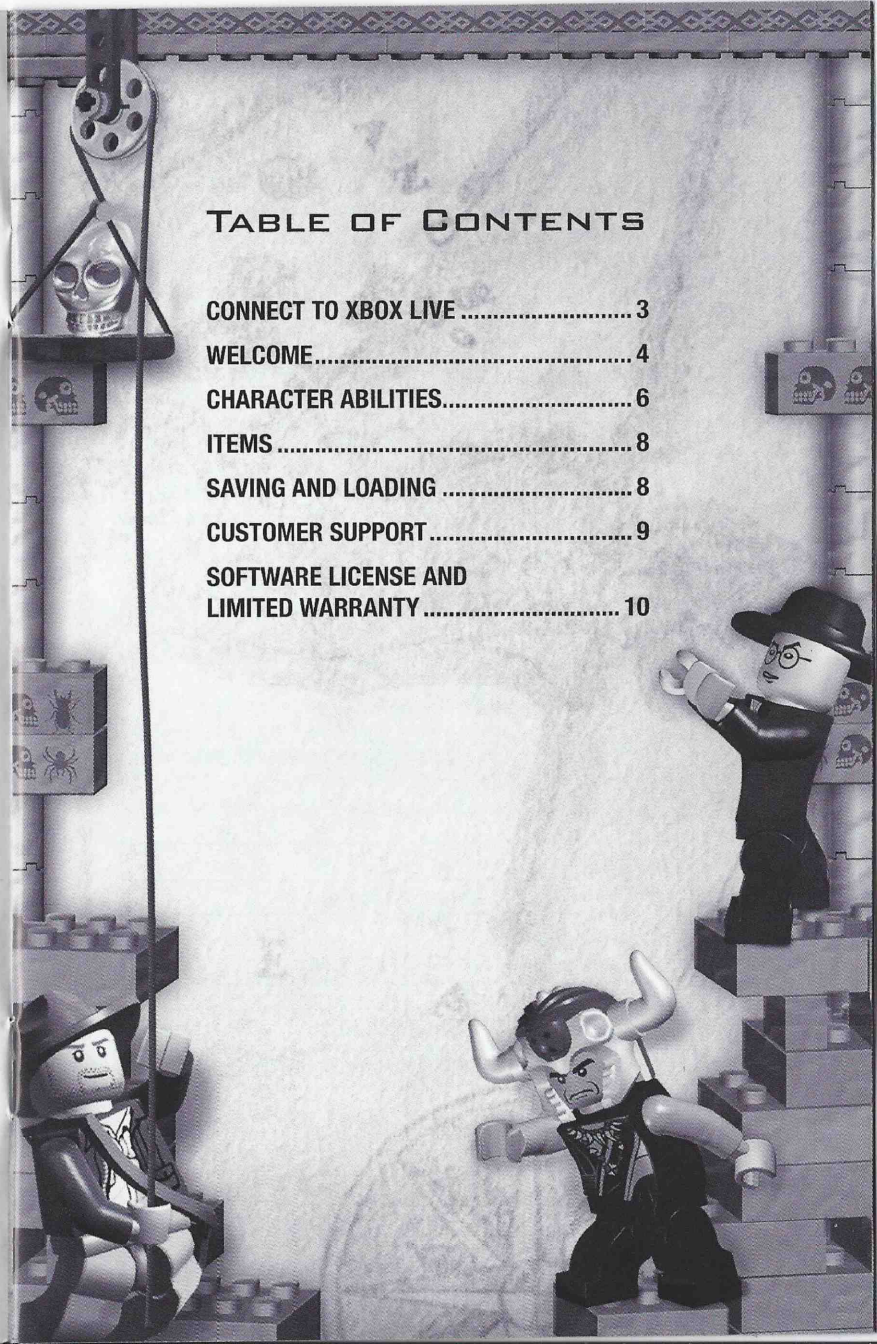
- **Rating Symbols** suggest age appropriateness for the game. These symbols appear on the front of virtually every game box available for retail sale or rental in the United States and Canada.
- **Content Descriptors** indicate elements in a game that may have triggered a particular rating and/or may be of interest or concern. The descriptors appear on the back of the box next to the rating symbol.



For more information, visit www.ESRB.org

TABLE OF CONTENTS

CONNECT TO XBOX LIVE	3
WELCOME.....	4
CHARACTER ABILITIES.....	6
ITEMS	8
SAVING AND LOADING	8
CUSTOMER SUPPORT.....	9
SOFTWARE LICENSE AND LIMITED WARRANTY	10



GAME CONTROLS

XBOX 360 CONTROLLER



CONTROLS

Free Tag	Y button
Attack / Hold to Target	X button
Use Ability / Tool / Tool Pick Up / Switch Weapon / Cancel	B button
Jump / Select Highlighted Menu Option	A button
Freeplay Character Toggle	right bumper
Character / Vehicle Navigation / Highlight Menu Option / Move Target	left stick
Pause / In-game Options	START button
Freeplay Character Toggle	left bumper

XBOX LIVE

Play anyone and everyone, anytime, anywhere on Xbox LIVE®. Build your profile (your gamer card). Chat with your friends. Download content (TV shows, trailers, HD movies, game demos, exclusive game content, and Arcade games) at Xbox LIVE Marketplace. Send and receive voice and video messages. Use LIVE with both Xbox 360® and Windows®. Play, chat, and download on both your PC and your Xbox 360. LIVE gives you ultimate access to the things you want and the people you know, on both your PC and your TV. Get connected and join the revolution!

CONNECTING

Before you can use Xbox LIVE, connect your Xbox 360 console to a high-speed Internet connection and sign up to become an Xbox LIVE member.

For more information about connecting, and to determine whether Xbox LIVE is available in your region, go to www.xbox.com/live/countries.

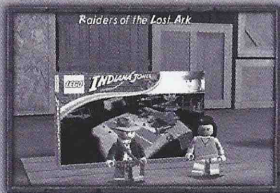
FAMILY SETTINGS

These easy and flexible tools enable parents and caregivers to decide which games young game players can access based on the content rating. Parents can restrict access to mature-rated content. Approve who and how your family interacts with others online with the Xbox LIVE service. And set time limits on how long they can play. For more information, go to www.xbox.com/familysettings.

WELCOME

Indy is back to outsmart the bad guys, outrun the boulders and out-solve the puzzles in his latest LEGO® adventure! Get that whip cracking in **LEGO® Indiana Jones™ 2: The Adventure Continues** with Indy and his colorful cast of friends and enemies!

PLAYSETS



STORY PLAYSETS

Open the LEGO® Playset to discover new worlds to play in. Only the first *Indiana Jones and the Kingdom of the Crystal Skull* box can be opened at the start, but others will become available as you progress. Collect new characters in each box to expand your adventure and gain access to new areas.

Free Play

Open the Free Play box to mix up characters from different movies. Choose your favorite characters and vehicles, then jump straight into a level of your choice.

Build your own adventure

Collect together unlocked levels, or levels that you have created into a whole new globe spanning escapade for Indy. Select the levels, locations, characters and the quest items to fashion your own rollercoaster of an adventure.

Build your own level

For the first time ever, you can now build your own levels and design your own gameplay! Choose the "Build Your Level" option, then use the LEGO® characters to place and move LEGO® bricks, models, vehicles and even other characters! Lay down baseplates, add traps and when you're done with your LEGO® masterpiece, select the "Play Level" option to test it all out!

Note that a limited amount of elements and models are available from the very start – you'll unlock more as you progress.

THE MOVIE HUBS

Experience a whole new way to enjoy LEGO® *Indiana Jones'* adventures with the Movie Hubs. All of the action and excitement of the *Indiana Jones* movies have been condensed into a playable area filled with levels and challenges to find and secrets to unlock.

STORY MODE

Search for doors and other entrances to uncover levels based on the actual *Indiana Jones* movies. As Indy and his friends progress, discovering new characters and abilities along the way, further areas will become available for exploration.

TREASURE MODE

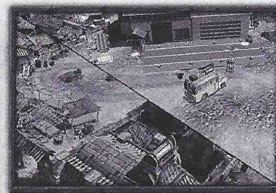
Once a level has been completed in Story Mode, it can be played again in Treasure Mode. Players will encounter a different challenge than seen previously, requiring two new characters to complete.

CHARACTER PURCHASER

As you progress through the Hubs, you'll be able to purchase new characters. The special purchasable characters when approached will display their character name and cost in LEGO® studs. Press the A button to buy the character.

RED BRICKS

Complete challenges in the Hubs to unlock Red Bricks. These will be parachuted in and will enable cheats to be purchased when collected.



SPLIT SCREEN

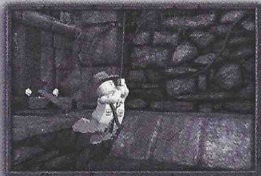
When two people are playing together, they can each head off on their adventures with the new split screen feature. Moving back towards the center of the screen will reunite you with your companion.

CHARACTER ABILITIES

BUILDING

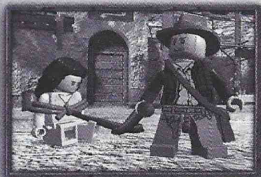
In the world of LEGO® *Indiana Jones™ 2: The Adventure Continues* you'll often need to build objects out of LEGO® pieces to overcome obstacles. Just approach a pile of bouncing LEGO® bricks and press and hold the B button to build.

THE WHIP



Whip Swing

Indy can now use his whip to swing across chasms to safety at any point where a whip swing point is displayed. Indy's whip also transforms into a makeshift rope which he can climb and swing from to reach previously inaccessible locations. Holding the left stick to the left or right in the intended swing direction will help you gain more momentum.



Whip Tie

Indy can entangle enemies using his whip, rendering them helpless. Once an enemy is tied up, pick him up with the B button or drag him wherever you want! Be careful, enemies can eventually wriggle free of the whip. They are also more vulnerable to attacks when entangled in this way.

Whip Targeting

When armed with the whip, press and hold the X button to begin Whip Targeting. While Indy is spinning his whip, you can guide the cursor across the screen to grab objects and target bad guys that may otherwise be unreachable.

COMBAT

All characters can attack with their fists, but try finding a tool or a melee weapon to dispatch the enemy far quicker. When carrying more than one weapon, pressing the B button will cycle between melee, weapons drawn from your hip holster, or tools / weapons from your character's back.

RANGED TARGETING

When armed with a weapon or tool that can be thrown (such as a spear), press and hold the X button to bring up the targeting cursor. With this, you can aim at objects more accurately.

ROPE CLIMB / SWING

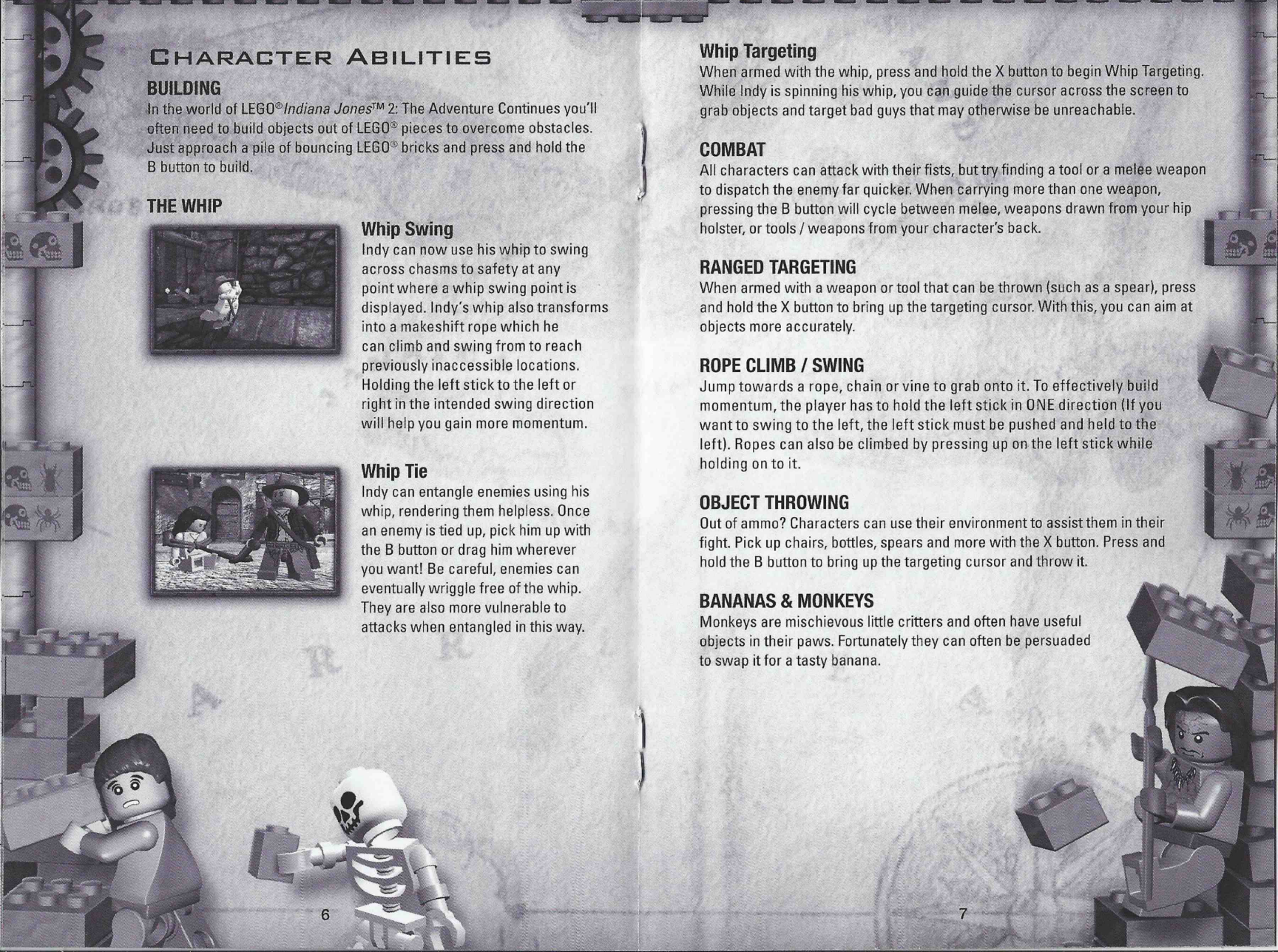
Jump towards a rope, chain or vine to grab onto it. To effectively build momentum, the player has to hold the left stick in ONE direction (If you want to swing to the left, the left stick must be pushed and held to the left). Ropes can also be climbed by pressing up on the left stick while holding on to it.

OBJECT THROWING

Out of ammo? Characters can use their environment to assist them in their fight. Pick up chairs, bottles, spears and more with the X button. Press and hold the B button to bring up the targeting cursor and throw it.

BANANAS & MONKEYS

Monkeys are mischievous little critters and often have useful objects in their paws. Fortunately they can often be persuaded to swap it for a tasty banana.



ITEMS

SILVER LEGO® OBJECTS

Silver LEGO® objects are remarkably robust and vulnerable only to explosives. You'll need dynamite, a grenade or other explosive types of weapons in order to break them.

MOVEABLE OBJECTS

Some objects in the game can be pushed to reveal secret entrances or granting access to high platforms. Push the object in the direction you'd like to move it.

TORCHES

You can use torches to clear your path of critters and blow up obstacles. Also, torches can set some objects alight.

PHOBIA



Certain characters have fears that won't allow them to move forward. For example, Indiana Jones is afraid of snakes, Dr. Jones Sr. is afraid of rats, and Willie is afraid of bugs. Find a torch to clear the critters from your path and conquer the character's fears.

SAVING & LOADING

When you first complete a level or purchase an item you will be asked to select a save-game file. Choose which one and press the A button to confirm.

You will be asked if you wish to enable auto-save, which is recommended. If you do so, LEGO® *Indiana Jones™2: The Adventure Continues* will save your progress into this file automatically at the end of each chapter.

MULTIPLAYER

Indy's adventures often succeed because of a helping hand. To have a second player join in the action press the  button on the second controller. If you want to drop out, press the  button and select Drop Out from the Pause Menu.

CUSTOMER SUPPORT

WHERE TO FIND US ONLINE

Visit the LucasArts Web site at www.lucasarts.com. From there you can access the Support area where you will have the option to receive online technical support through Yoda's Help Desk, browse technical documents, or leave a message for an online representative.

YODA'S HELP DESK

We are proud to feature Yoda's Help Desk, an interactive knowledge base, which is available in the Support section of the LucasArts Web site at <http://support.lucasarts.com>. Yoda's Help Desk offers solutions to technical issues based on information you provide. Visitors to Yoda's Help Desk will be able to receive technical support 24 hours a day, seven days a week. If Yoda's Help Desk is unable to provide you with a solution to your problem, you will be given the option to submit an e-mail message to an online representative.

PRODUCT SUPPORT MAILING ADDRESS

LucasArts
P.O. Box 29908
San Francisco
CA 94129
ATTN: Product Support



SOFTWARE LICENSE AND LIMITED WARRANTY

PLEASE READ THIS LICENSE CAREFULLY BEFORE INSTALLING OR OTHERWISE USING THE SOFTWARE. BY INSTALLING OR OTHERWISE USING THE SOFTWARE, YOU ARE AGREEING TO BE BOUND BY THE TERMS OF THIS LICENSE. IF YOU DO NOT AGREE TO THE TERMS OF THIS LICENSE, DO NOT INSTALL OR USE THE SOFTWARE AND PROMPTLY RETURN THIS PACKAGE AND ITS CONTENTS TO THE PLACE OF PURCHASE FOR A REFUND OR EXCHANGE SUBJECT TO THE RETURN POLICY OF THE RETAILER.

The computer program, artwork, music, printed materials, on-line or electronic documentation, and other components included in this product and all copies of such materials as such as may be modified or updated (collectively referred to as the "Software"), are the copyrighted property of LucasArts, a division of Lucasfilm Entertainment Company Ltd. and/or its affiliated entities or divisions, and its licensors (collectively referred to as "LucasArts" or "Publisher"). The Software is non-exclusively licensed (not sold) to you, and LucasArts owns and/or controls all copyright, trade secret, patent and other proprietary rights in the Software. LucasArts may make improvements, modifications, or updates to the Software at any time and with or without notice to you, which may be automatically downloaded into the memory card(s) used in connection with the Software. Such updates or improvements may change the game play associated with the Software.

Subject to the terms and conditions of this Agreement, you may use the Software, solely for your personal use and only in connection with a Microsoft Xbox 360 video game system. You may not circumvent or attempt to circumvent any technological measures in the Software or the media designed to prevent copying or unauthorized access.

All rights not specifically granted under this Agreement are reserved by LucasArts and, as applicable, their licensors. You may not: (1) copy the Software in its entirety onto a hard drive or other storage device and you must run the Software from the included Digital Versatile Disc ("DVD"); (2) distribute, rent, lease or sublicense all or any portion of the Software; (3) modify or prepare derivative works of the Software, except as otherwise may be allowed herein; (4) transmit the Software over a network, by telephone, or electronically using any means, or permit use of the Software, in a network, multi-user arrangement or remote access arrangement except in the course of your network multiplayer play of the Software over authorized networks in accordance with its documentation; (5) engage in matchmaking for multi-player play over unauthorized networks; (6) design or distribute unauthorized levels; (7) reverse engineer the

Software, derive source code, or otherwise attempt to reconstruct or discover any underlying source code, ideas, algorithms, file formats, programming or interoperability interfaces of the Software by any means whatsoever, except to the extent expressly permitted by law despite a contractual provision to the contrary, and then only after you have notified LucasArts in writing of your intended activities; (8) remove, conceal, disable, or circumvent any proprietary notices or labels contained on or within the Software; (9) export or re-export the Software or any copy or adaptation thereof in violation of any applicable laws or regulations; or (10) commercially exploit the Software or any portion or derivative thereof, specifically at any cyber café, computer gaming center or any other public site without first obtaining a separate license from LucasArts (which it may or may not issue in its sole discretion) for such use, and LucasArts may charge a fee for any such separate license.

You may transfer the Software, but only if the recipient agrees to accept and be bound by the terms and conditions of this Agreement. If you transfer the Software, you must transfer all components and documentation. Your rights in and to this license are automatically terminated if and when you transfer the Software.

LucasArts warrants to the original consumer purchaser only that the media furnished in this Software will be free from defects in materials and workmanship under normal use for a period of ninety (90) days from the date of purchase (as evidenced by your receipt). If the media furnished in this Software proves to be defective, and provided that the original consumer purchaser returns the media to LucasArts in accordance with the instructions in this paragraph, LucasArts will replace the defective media: (a) free of charge to the original consumer purchaser, if the media proves to be defective within the ninety (90) day period following the date of purchase, or (b) for a fee of \$15.00 (all references herein are to United States dollars) per DVD, if the media proves to be defective after the expiration of the ninety (90) day warranty period, provided that the request is made within a reasonable time from purchase, and LucasArts continues to distribute the DVD commercially. To obtain a replacement DVD, please return the defective DVD only, postage prepaid, to LucasArts, a division of Lucasfilm Entertainment Company Ltd., P.O. Box 29908, San Francisco, CA 94129, accompanied by proof of date of purchase, a description of the defect, and your name and return address, as well as a check for \$15.00 per DVD made payable to LucasArts if after expiration of the warranty period. LucasArts will mail a replacement to you. In the event that the Software is no longer available, LucasArts retains the right to substitute a similar product of equal or greater value. This warranty is not applicable and shall be void if the defect has arisen through abuse, mistreatment, neglect, or from normal wear and tear. LucasArts has no obligation to provide support, maintenance, upgrades, modifications or new releases under this Agreement.

You expressly acknowledge and agree that use of the Software is at your sole risk. Except for the limited ninety (90) day warranty on the media set forth above, the Software and any related documentation or materials are provided "AS IS" and without warranty of any kind. LUCASARTS EXPRESSLY DISCLAIMS ALL WARRANTIES, EXPRESS AND IMPLIED, INCLUDING, BUT NOT LIMITED TO, THE IMPLIED WARRANTIES OF MERCHANTABILITY, FITNESS FOR A PARTICULAR PURPOSE AND NON-INFRINGEMENT. LUCASARTS DOES NOT WARRANT THAT THE FUNCTIONS CONTAINED IN THE SOFTWARE WILL MEET YOUR REQUIREMENTS, THAT THE OPERATION OF THE SOFTWARE WILL BE UNINTERRUPTED OR ERROR-FREE, OR THAT DEFECTS IN THE SOFTWARE WILL BE CORRECTED. LUCASARTS SHALL ALSO NOT BE LIABLE FOR ANY DELAYS, SYSTEM FAILURES OR SYSTEM OUTAGES WHICH MAY AFFECT ONLINE GAME PLAY OR ACCESS THERETO. LUCASARTS RESERVES THE RIGHT TO DISCONTINUE MAKING THE SERVER AVAILABLE (AND YOUR ABILITY TO PLAY THE GAME) AT ANY TIME AND FOR ANY REASON. THE ENTIRE RISK AS TO THE RESULTS AND PERFORMANCE OF THE SOFTWARE IS ASSUMED BY YOU, AND YOU (AND NOT LUCASARTS) ASSUME THE ENTIRE COST OF ALL SERVICING, REPAIR AND/OR CORRECTION. SOME JURISDICTIONS DO NOT ALLOW THE EXCLUSION OF IMPLIED WARRANTIES, SO THE ABOVE EXCLUSION MAY NOT APPLY TO YOU.

UNDER NO CIRCUMSTANCES INCLUDING NEGLIGENCE, SHALL LUCASARTS, OR ITS DIRECTORS, OFFICERS, EMPLOYEES, LICENSORS, LICENSEES OR AGENTS, SUCCESSORS OR ASSIGNS BE LIABLE TO YOU FOR ANY INCIDENTAL, INDIRECT, SPECIAL, PUNITIVE OR CONSEQUENTIAL DAMAGES (INCLUDING DAMAGES FOR LOSS OF BUSINESS PROFITS, BUSINESS INTERRUPTION, LOST DATA, LOSS OF BUSINESS INFORMATION, AND THE LIKE) ARISING OUT OF THE POSSESSION, USE, INABILITY TO USE, OR MALFUNCTION OF THIS PRODUCT, INCLUDING WITHOUT LIMITATION, DAMAGE TO PROPERTY AND, TO THE EXTENT PERMITTED BY LAW, DAMAGES FOR PERSONAL INJURY, EVEN IF LUCASARTS OR A LUCASARTS AUTHORIZED REPRESENTATIVE HAS BEEN ADVISED OF THE POSSIBILITY OF SUCH DAMAGES OR LOSS. SOME JURISDICTIONS DO NOT ALLOW THE LIMITATION OR EXCLUSION OF LIABILITY FOR INCIDENTAL OR CONSEQUENTIAL DAMAGES, SO THE ABOVE LIMITATION OR EXCLUSION MAY NOT APPLY TO YOU.

YOU AGREE THAT THE LIABILITY OF LUCASARTS ARISING OUT OF ANY KIND OF LEGAL CLAIM (WHETHER IN CONTRACT, TORT, OR OTHERWISE) WILL NOT EXCEED THE AMOUNT YOU ORIGINALLY PAID FOR THE USE OF THE SOFTWARE. YOU AGREE TO WAIVE ANY RIGHT TO EQUITABLE RELIEF, INCLUDING, WITHOUT LIMITATION, ANY INJUNCTIVE RELIEF, TO ENFORCE THE TERMS HEREOF. THE PARTIES ACKNOWLEDGE THAT THE LIMITATIONS OF LIABILITY IN THIS AND OTHER PROVISIONS OF THIS AGREEMENT AND THE ALLOCATION OF RISK HEREIN ARE AN ESSENTIAL ELEMENT OF THE BARGAIN BETWEEN THE PARTIES, WITHOUT WHICH LUCASARTS WOULD NOT HAVE ENTERED INTO THIS AGREEMENT. LUCASARTS' PRICING REFLECTS THIS ALLOCATION OF RISK AND THE LIMITATION OF LIABILITY SPECIFIED HEREIN.

THIS WARRANTY GIVES YOU SPECIFIC LEGAL RIGHTS, AND YOU MAY HAVE OTHER RIGHTS DEPENDING ON THE LAWS IN YOUR STATE.

This Agreement is governed in all respects by the laws of the State of California as such laws are applied to agreements entered into and to be performed entirely within California between California residents, and you hereby consent to personal jurisdiction in California. This Agreement will not be governed by the United Nations Convention on Contracts for the International Sale of Goods, the application of which is expressly excluded. You and LucasArts each agree that any claim or controversy arising out of this Agreement or the Software shall be settled by expedited binding arbitration in accordance with the rules of the American Arbitration Association. Such arbitration shall take place in Marin County, California, and you waive any claim that such forum is inconvenient. Any such claim or controversy shall be arbitrated solely on an individual basis and shall not be consolidated with a claim of any other party. The arbitrator may not change the terms of this Agreement. The arbitrator may award injunctive or other equitable relief to enforce the terms hereof; provided, however, that no injunctive or equitable relief may be awarded that would enjoin or impair LucasArts' rights or ability to distribute or otherwise market, advertise, promote or exploit the Software. If it is judicially determined that any claim or controversy arising out of or related to this Agreement or the Software cannot be settled by expedited binding arbitration as noted above, then you agree that any such claims or controversies shall be brought and maintained in the state courts located within the County of Marin, State of California or the federal courts of the Northern District of California, and you waive any claim that either such forum is inconvenient. The foregoing shall not preclude LucasArts from seeking any injunctive or other relief for protection of LucasArts' intellectual property rights or similar rights in any court of competent jurisdiction. Because LucasArts would be irreparably damaged if the terms of this Agreement were not specifically enforced, you agree that LucasArts shall be entitled, without bond, other security or proof of damages, to appropriate equitable remedies with respect to breaches of this Agreement, in addition to such other remedies as LucasArts may otherwise have under applicable laws. The prevailing party in any action to enforce this Agreement shall be entitled to recover costs and expenses including, without limitation, reasonable attorney's fees. LucasArts shall have the right, but not the obligation, to defend or settle, at its option, any action or proceeding arising from a claim that your permitted use of the Software infringes or misappropriates any patent, copyright, or other ownership of a third party. You agree to provide LucasArts with written notice of any such claim within ten (10) business days of your first knowledge thereof and to provide reasonable assistance in the defense of such claim. LucasArts shall have sole discretion and control over the defense or settlement of such claim, unless it declines to defend or settle such claim, in which case you are free to pursue such course of action as you reasonably determine. LucasArts is under no obligation hereunder to indemnify or hold you harmless with respect to any actions, proceedings or claims. In the event of such a claim, or if LucasArts believes such a claim is likely, LucasArts may: (i) procure for you the right to continue using the Software; (ii) modify the Software so that it becomes non-infringing; or, (iii) terminate this Agreement. You agree to

comply with any court judgment or other conditions imposed on you or LucasArts as a result of an allegation of patent or copyright infringement (whether by court order, agreement or otherwise), whether or not such judgment or conditions contradict the conditions of this Agreement, including without limitation, ceasing use of the Software.

If any provision of this Agreement is held to be invalid or unenforceable, such provision shall be struck and the validity and enforceability of the remainder of this Agreement shall in no way be affected or impaired thereby and such provision shall be enforced to the maximum extent possible so as to effect the intent of the parties and shall be reformed without further action by the parties to the extent necessary to make such provision valid and enforceable. LucasArts' failure to act with respect to a breach by you or others does not waive LucasArts' right to act with respect to subsequent or similar breaches, nor will any single or partial exercise of any right hereunder preclude further exercise of any other right hereunder. This Agreement sets forth the entire understanding and agreement between you and LucasArts with respect to the subject matter hereof. Except as provided herein, this Agreement may not be amended except in a writing signed by both parties; provided, however, that LucasArts has the right, without notice and/or without a writing signed by both parties, to amend this Agreement in connection with any modifications or updates to the Software.

The license term shall commence as of the date you install or otherwise use the Software. You may terminate this license by disposing of the Software. Without prejudice to any other rights of LucasArts, this Agreement will terminate automatically if you fail to comply with its terms and conditions. In such event, you must destroy all copies of the Software and all its component parts. Your disposal or destruction of the Software and any component parts must be done in accordance with applicable law. Except for the license granted herein and as expressly provided herein, the terms of this Agreement will survive termination.

If the Software is acquired under agreement with the U.S. government or any agency or instrumentality thereof or contractor therewith, it is acquired as "commercial computer software" subject to the provisions hereof, as specified in 48 CFR 12.212 of the FAR and, if acquired for Department of Defense (DoD) units, 48 CFR 227-7202 of the DoD FAR Supplement, or sections succeeding thereto.

LucasArts, the LucasArts logo, *INDIANA JONES* and related properties are trademarks in the United States and/or in other countries of Lucasfilm Ltd. and/or its affiliates. © 2008-2009 Lucasfilm Entertainment Company Ltd. or Lucasfilm Ltd. All rights reserved. LEGO, the LEGO logo and the Minifigure are trademarks of The LEGO Group. © 2008-2009 The LEGO Group. All rights reserved.

Online play subject to online terms of use and privacy policy as may be available online at www.lucasarts.com or such other site as LucasArts may designate.

This game and manual are each a work of fiction. All of the characters, events, locations, logos, and entities portrayed in this game are fictional. Any resemblance to real persons, living or dead, or actual events, is purely coincidental.

LucasArts, a division of
Lucasfilm Entertainment Company Ltd.
P.O. Box 29908
San Francisco, CA 94129

Nov09